

Virtual Microscopy Training

for

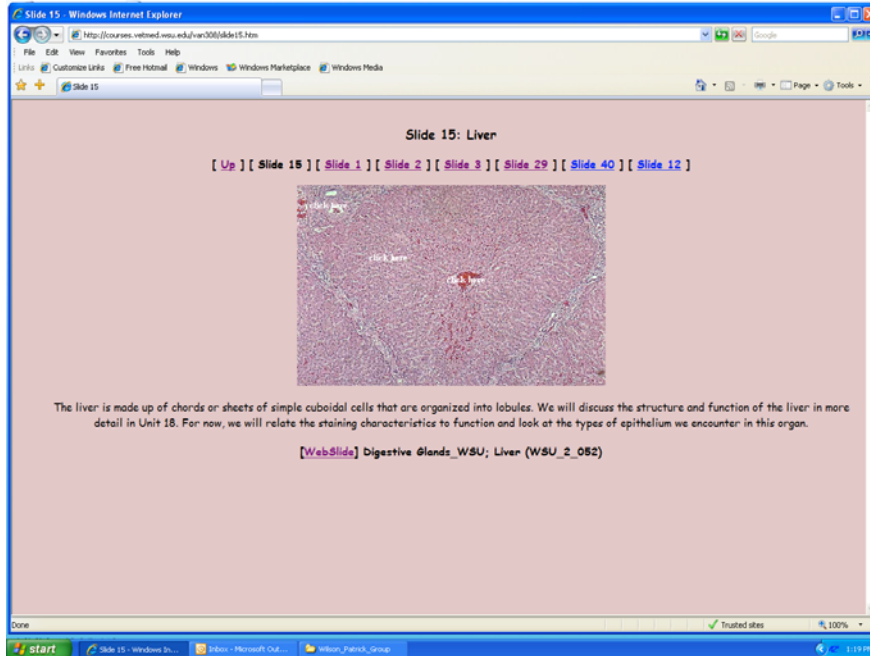
Medical Education



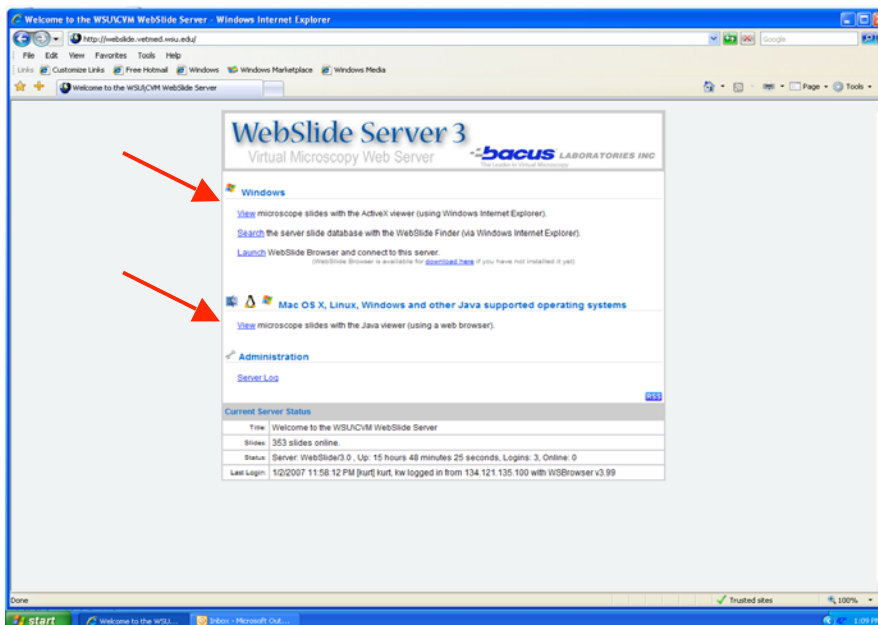
**VAN308 –Functional Anatomy of Domestic Animals
College of Veterinary Medicine
Washington State University
Pullman, WA 99164**

Viewing Virtual Slides with Your Internet Browser

- ✓ If you are viewing from home, first go to <http://www.baculus.com/blog/general/Downloads.html> to download **WebSlide Net Viewer Active X [Windows®]** or go to <http://www.java.com/getjava/> to download Java [Mac® OS X, Solaris®, Windows®].

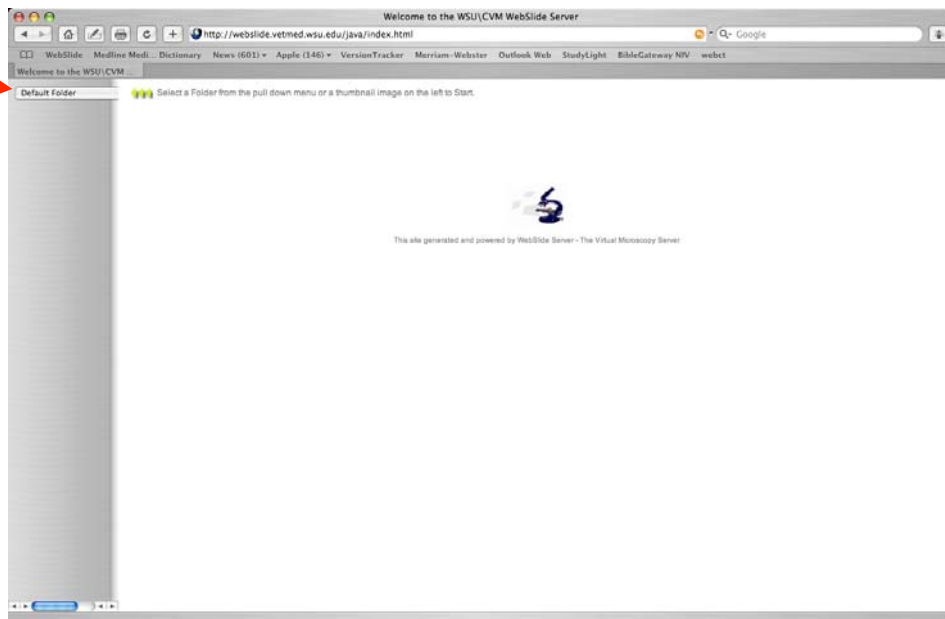


- ✓ To view a virtual slide while in the VAn 308 website, clicking on the [WebSlide] link, noting the folder to look in and slide to observe. You will first be presented with a window such as that below.



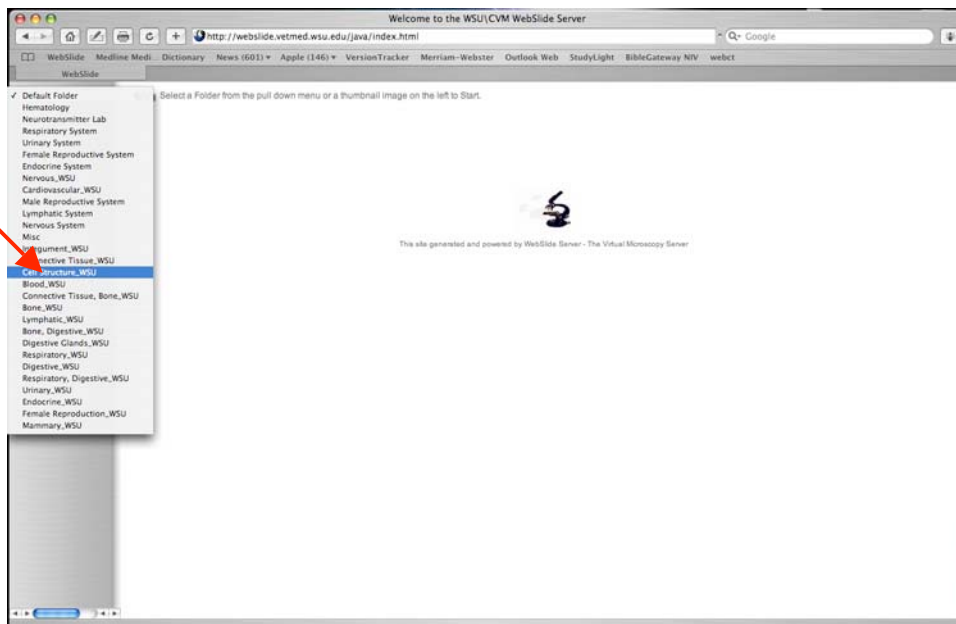
- ✓ If you choose the first (ActiveX for Windows®) or second (Java for Linux® / Mac® OS X / Solaris® / Windows®) option, your browser will open up a window such as the one below. In Windows, you may also launch WebSlide Browser from here after downloading it from Bacus Labs.

Click on
Default
Folder



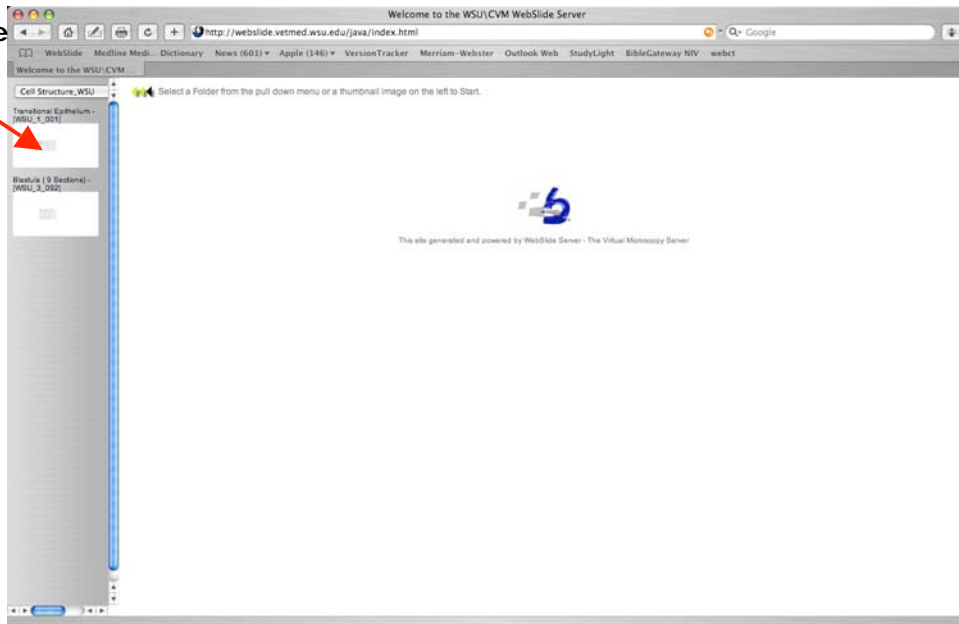
- ✓ Click on **“Default Folder”** to get a pull-down menu to choose the desired folder of slides. Our Laboratory slides will be in the folders with names followed by **_WSU**.

Choose
folder_**_WSU**

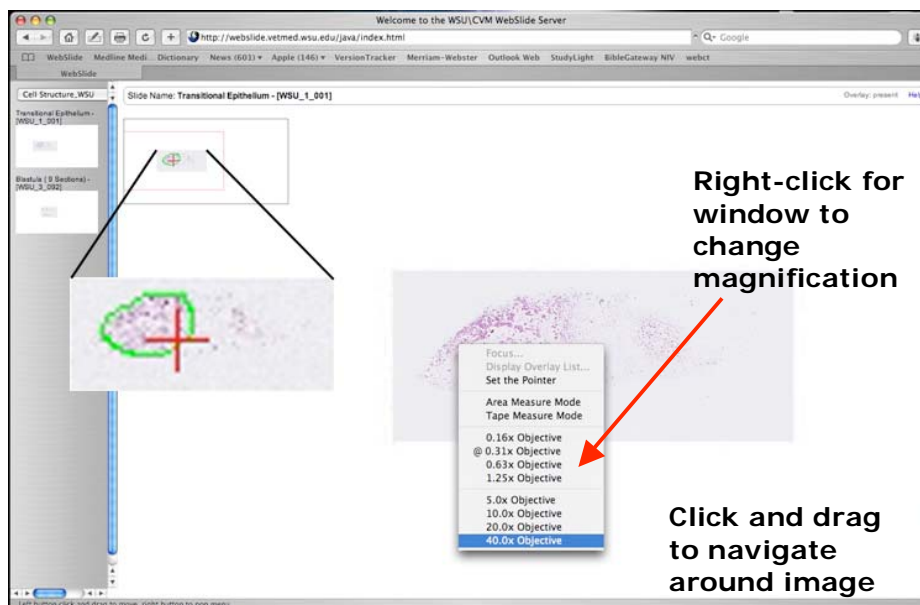


- ✓ Click on the desired slide in the left margin. (Be patient if you are accessing from a dial-up connection).

Choose slide

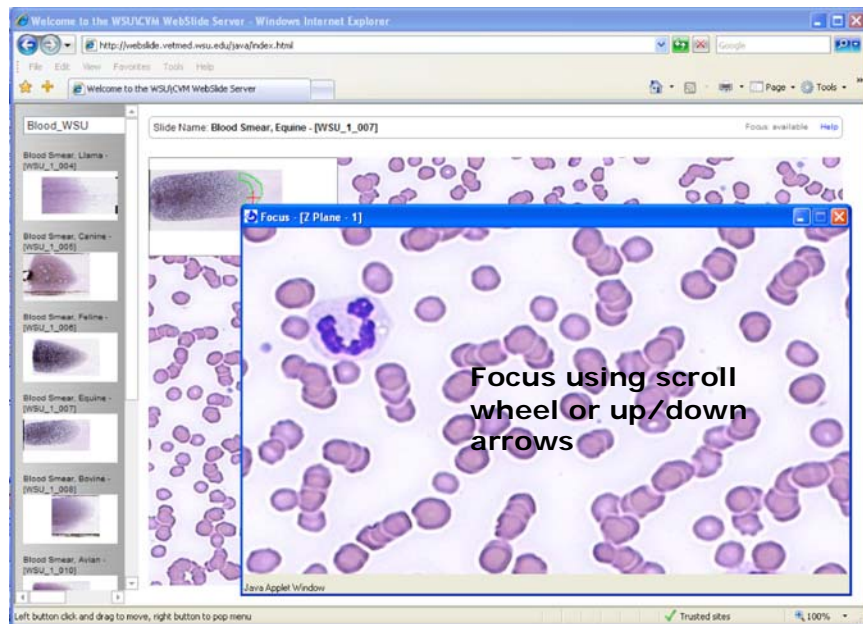


- ✓ Once downloaded, an image of the whole slide will be present in the upper left-hand corner of the window with the viewable area of the window outlined in a red box (see next image). The portion of the slide viewable at higher magnifications will be outlined in green, and a red cross will indicate the center of the viewable area.



- ✓ You can **click and drag** on the viewable image to move the view.
- ✓ **Right-click** (option-click on Mac®) on the image to get a menu to change magnifications.
- ✓ **Note:** You must **right-click** in the area indicated by the *green* line to view magnifications above 1.25X.

- ✓ Some slides, such as blood, will give you the option in the menu to **focus** the image. When you chose this, another window (image below) will open with your viewable image, and by turning the scroll wheel on your mouse or the arrow keys, you can view 3+ and 3- focal planes.



- ✓ If you are access WebSlide from a website and WebSlide does not open in a new window or a new tab, use the back arrow in your browser to return to the website.

Please note:

This manual is for use by CVM and VAN308 students at Washington State University and was created by Patrick D. Wilson, MS, DVM.