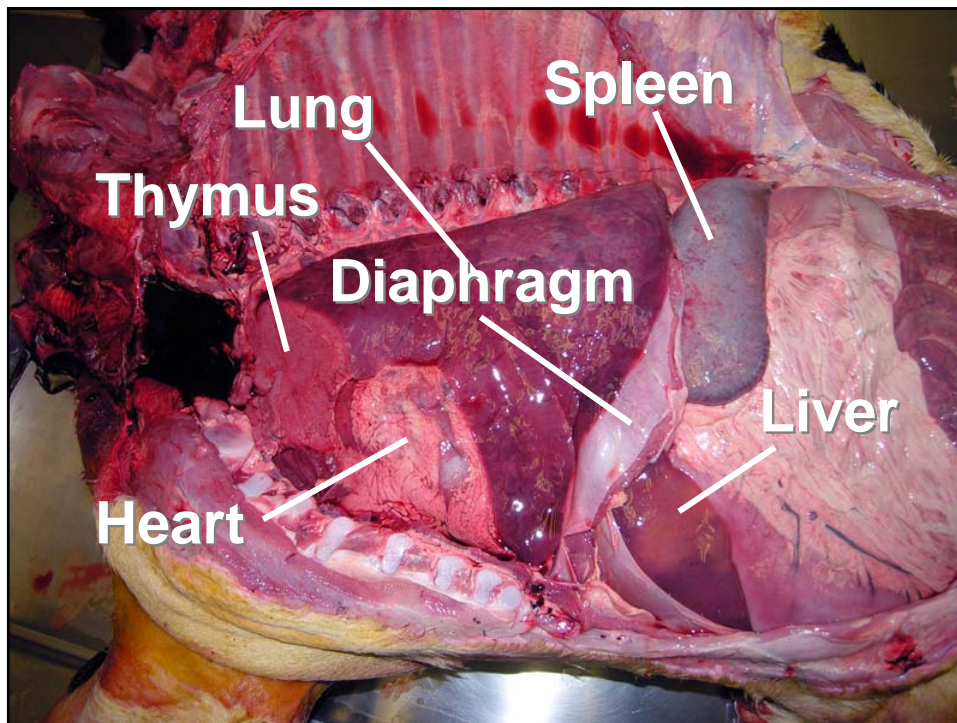
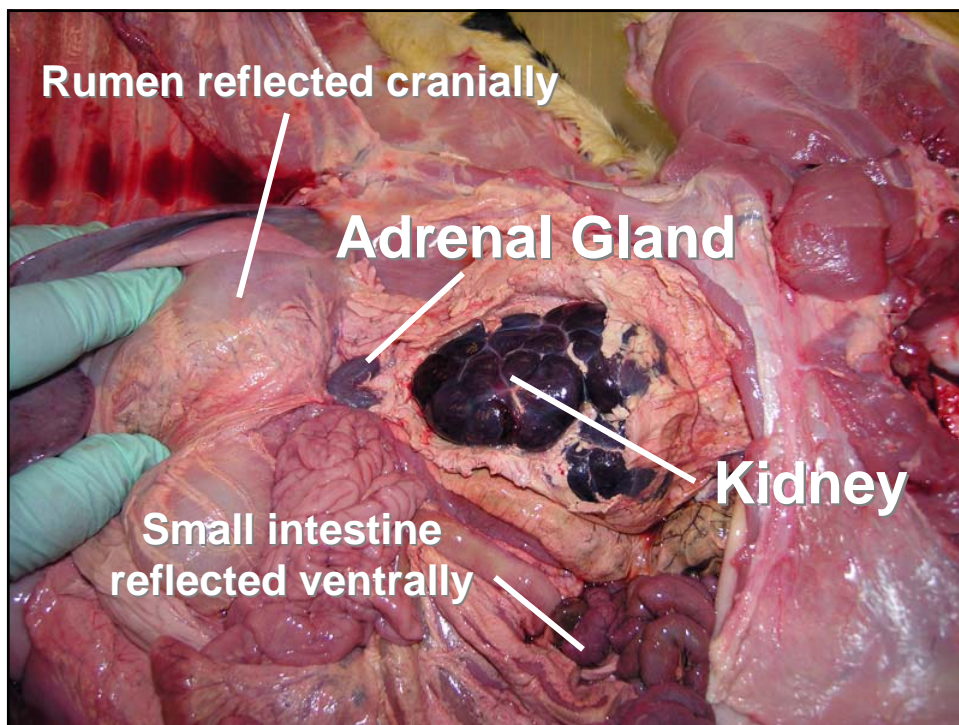
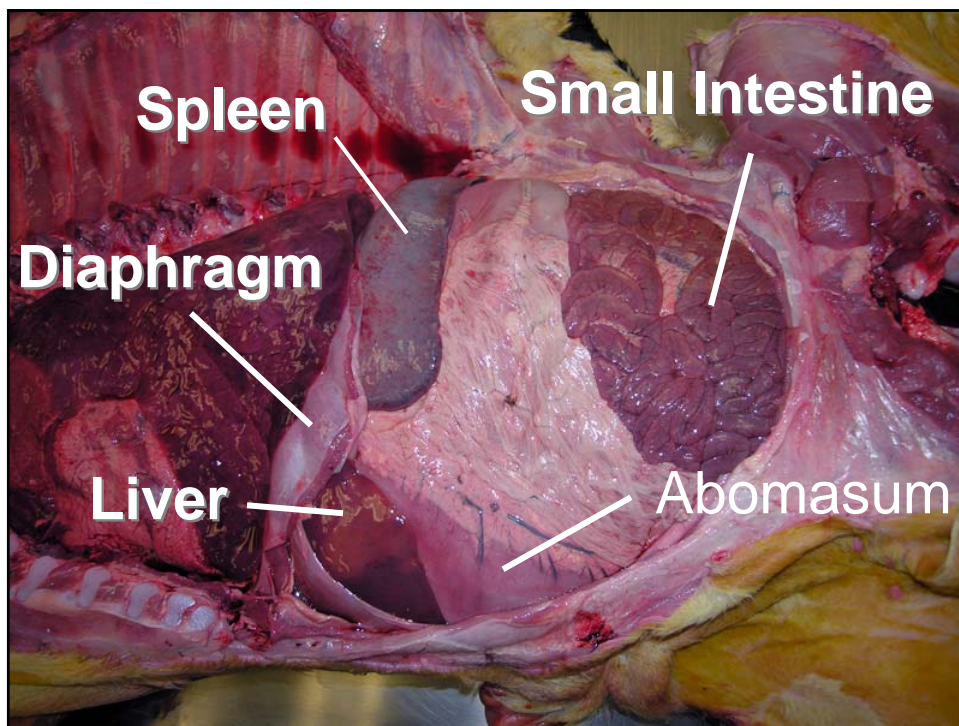


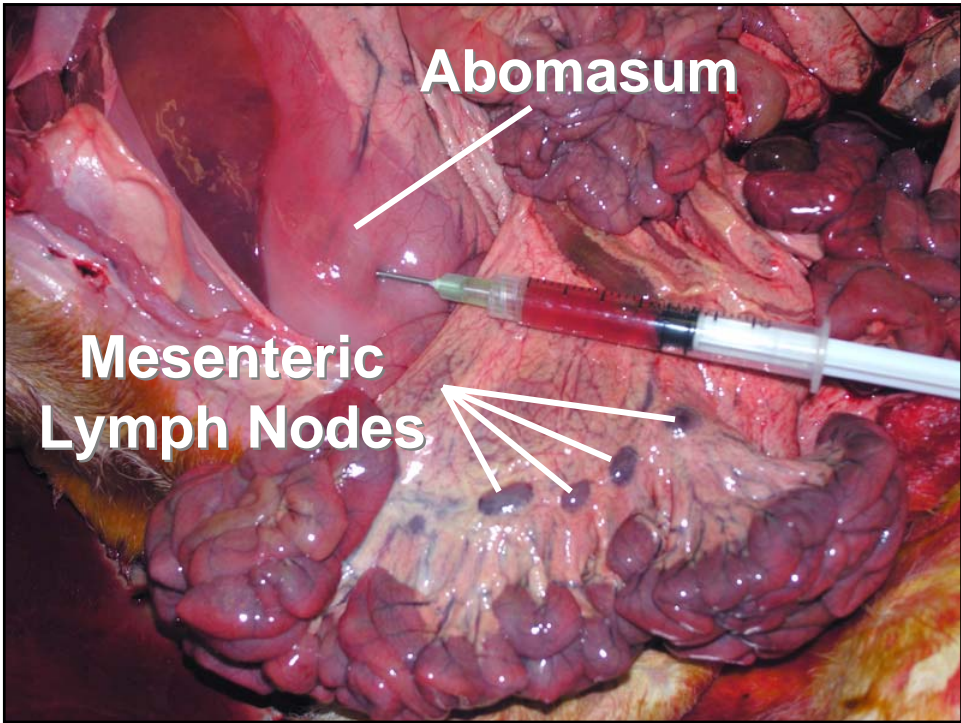
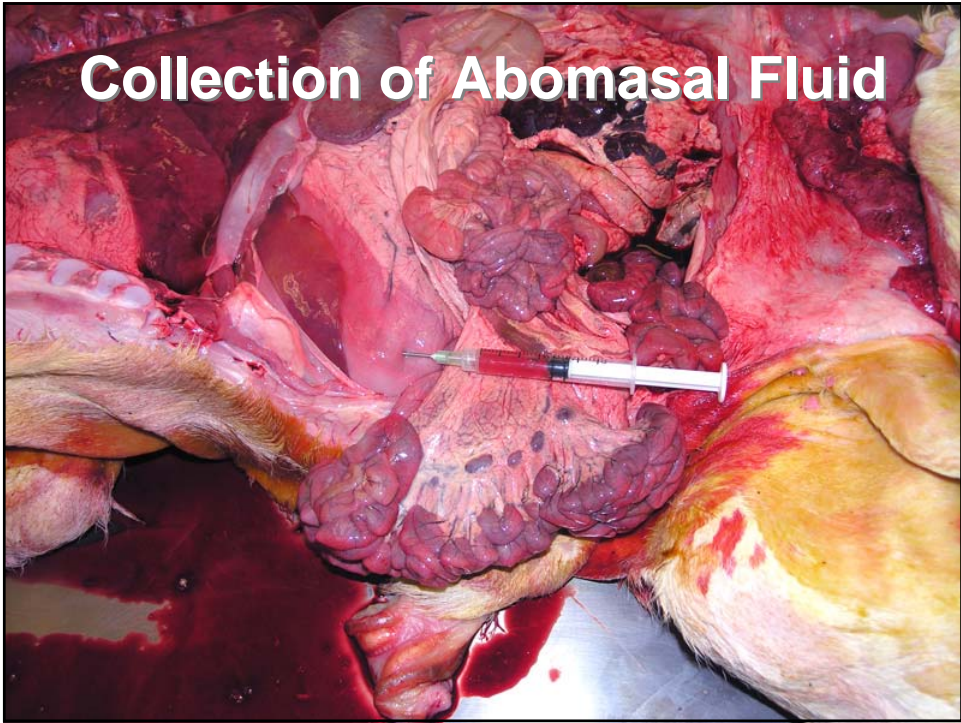
Supplies

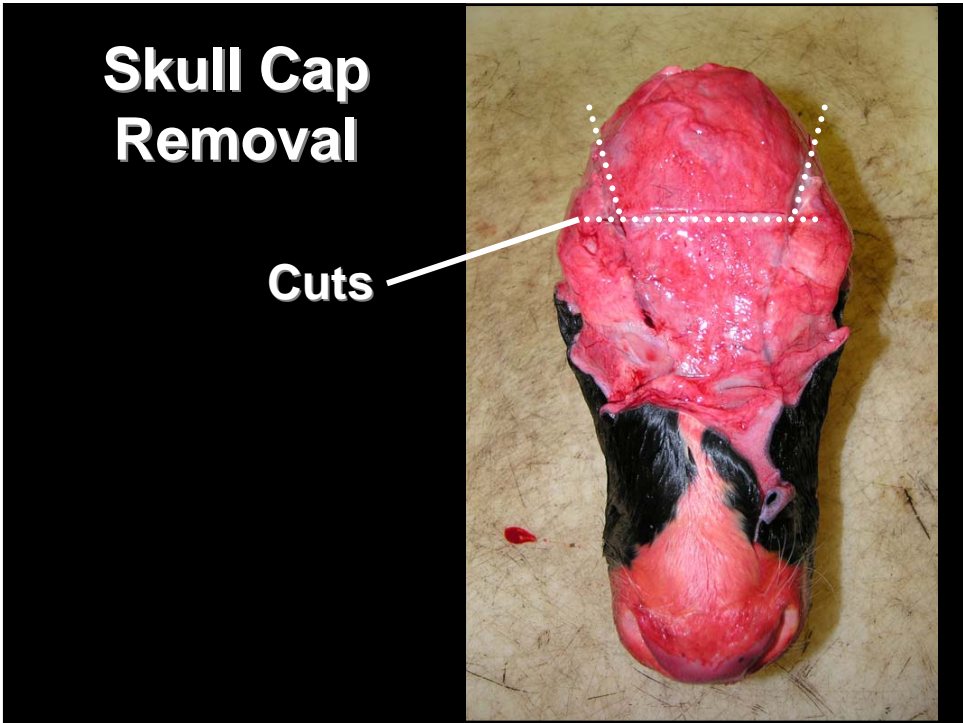
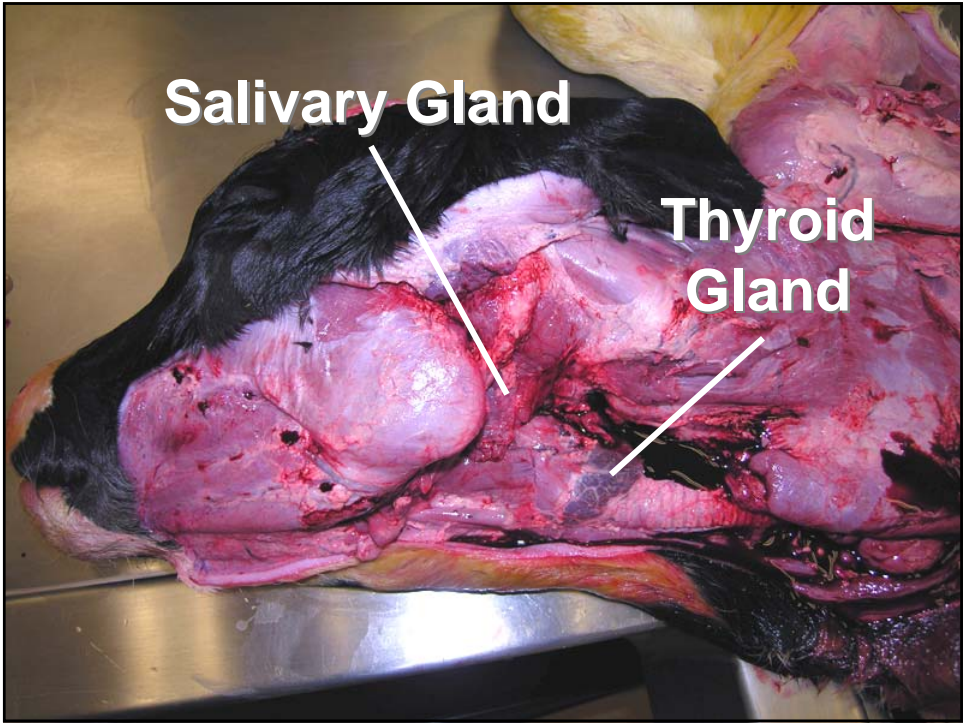


- Formalin
- Necropsy knife
- Sample bags
- Sterile and non-sterile instruments
- Sheep hoof trimmers (or similar nippers)
- Syringes/needles/red top tubes
- Sample collection list



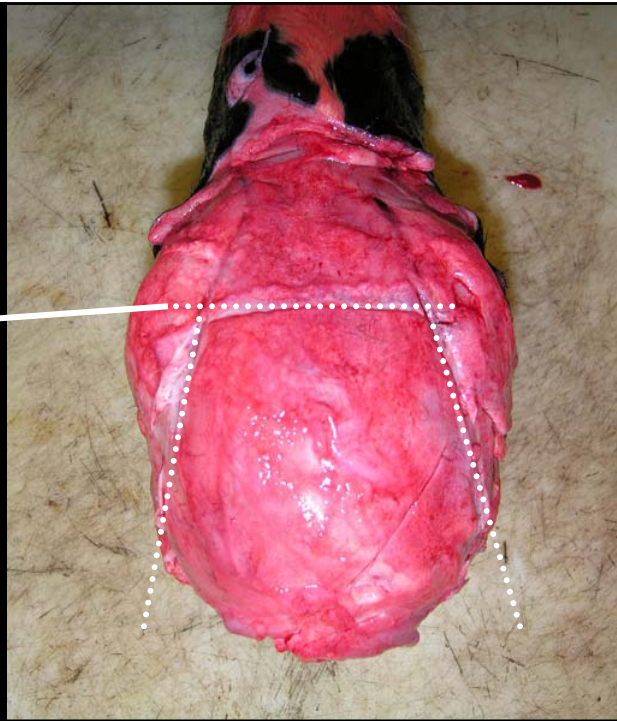






Skull Cap Removal

Cuts

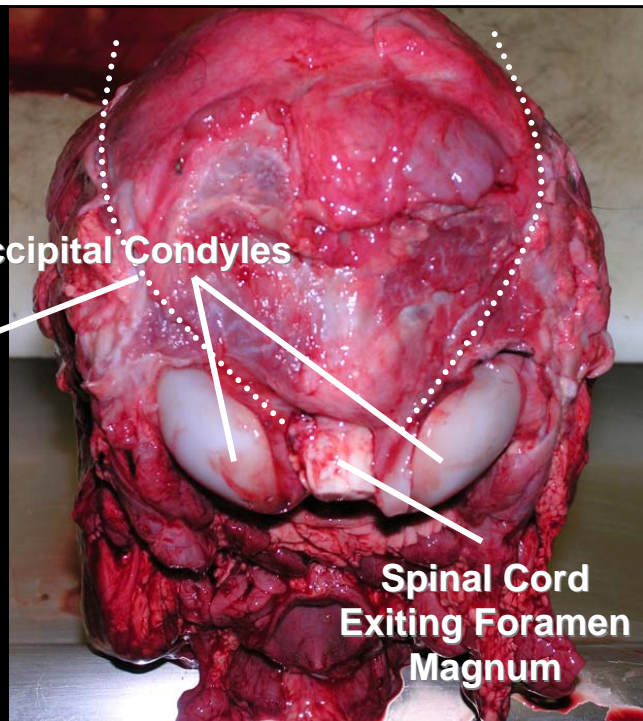


Skull Cap Removal

Cuts

Occipital Condyles

Spinal Cord
Exiting Foramen
Magnum



**Skull Cap
Removed**

